

# THANK YOU FOR YOUR PURCHASE!



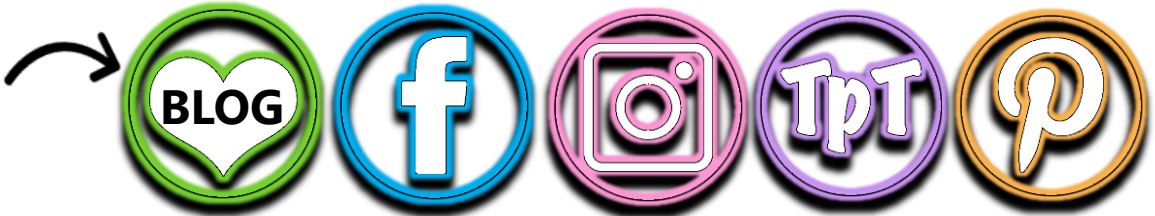
Did you know that when you leave feedback on TPT you earn credits towards future purchases?

★★★★★ Extremely satisfied

I truly appreciate your feedback to help my little store grow.

## LET'S BE FRIENDS

Access my  
Freebie  
Library



Stay updated on new product announcements (they are 50% off for the first 24 hrs posted!) by following me on TPT, checking out my website, and subscribing to my newsletter.



If you have any questions or concerns please email me at:  
[heartandmindteaching@gmail.com](mailto:heartandmindteaching@gmail.com)

♥  
*Ashley*

# GOOGLE SLIDES

Your resource comes with a digital version for use in Google Slides via Google Classroom. Follow these steps to upload your resource.

**1** Click here  [College Town](#)

**2** You will be prompted to make a copy of the resource. Click on the blue box that says “Make a copy” and the resource will go directly into your Google drive.

Google Drive

Copy document

Would you like to make a copy of Career Interest Inventory?

Make a copy



**3** Go to your Google Drive and locate the copy of the file. You can rename the file at this point or add/delete slides.

**4** Next, go to your Google Classroom and add an assignment. Select the Google Drive Symbol and select the resource you want to assign.

**5** From here, you should see a grey box that says “Students can view file.” Click the grey box. A dropdown menu should appear. Select, “Make a copy for each student.”

**YOU HAVE TO MAKE A COPY FOR EACH STUDENT!**

Otherwise they will all be editing the same file.

Click “Assign” in the top right corner if you’re ready to post!

This product is meant to be used in “edit” mode (not “presentation” mode). Edit mode is the only mode that allows drag & drop and writing in text boxes.

Helpful links for using Google Classroom:

[Teacher Tips for using Google Classroom \(TPT blog\)](#)

[Getting Started with Google Classroom \(youtube video\)](#)



# COLLEGE TOWN

## Information Booklet



# COLLEGE INFO GUIDE

### Acceptance Rate

0-9% Extremely Selective  
10-25% Very Selective  
26-50% Average Selective  
51-100% Less Selective

### Type of College

- **Public University:** Offer undergraduate programs leading to a bachelor's degree. Often have lower tuition rates for in-state residents, with larger student enrollment.
- **Private University:** Offer undergraduate programs leading to a bachelor's degree. Generally have higher tuition rates compared to public universities, with smaller student enrollment.
- **Community Colleges:** Offer two-year programs leading to an associate degree.
- **Technical Colleges or Schools:** Focus on specific trades or careers. Offer programs that typically take less time to complete than a degree.
- **Military Academies:** Provide a combination of military training and higher education.

# CHOOSING A COLLEGE

## Things to think about:

**Location:** •Do you want an urban, suburban, or rural setting?

•Do you want a large or small school?

•Do you want to live close or far from home?

•Is the weather in that area acceptable to you?

•Will you live on campus or off campus?

**Cost:** •What is the overall cost of attendance, including tuition, fees, room, and board?

•What scholarships, grants, work-study programs, and loan options are there?

•What is the potential return on investment based on graduation rates, job placement rates, and average starting salaries of graduates?

**Field of interest:** •What subjects/activities do you enjoy?

•What subjects do you excel in?

•Reflect on what is important to you in a career (e.g., helping others, high income, job stability).

**Social Life:** •What clubs, organizations, sports, and other extracurricular activities are you interested in?

# NORTHWESTERN UNIVERSITY

## Evanston, Illinois

Located near Chicago, it is known for its journalism and marketing communications programs, producing many successful journalists and media professionals.

**Type:** Private University

**Acceptance rate:** 7%, Extremely selective.

**Popular Majors:** Communication, journalism, engineering, computer science, mathematics, statistics, biological sciences, physics, and chemistry.

**Fun Fact:** Northwestern is one of the only universities with a beach right on campus! The students call it 'Northwestern Beach,' and it's a popular spot when the weather's warm.



# NEBRASKA COLLEGE OF TECHNICAL AGRICULTURE

## Curtis, Nebraska

This college specializes in agriculture and offers practical, hands-on learning experiences. Students have access to farm and ranch operations, veterinary facilities, and greenhouses.

Type: Technical College

Acceptance rate: 99%, Less selective.

Popular Majors: Agribusiness Management, Agronomy (crop production), Animal Science, Veterinary Technology, Pest Mgmt, Horticulture (growing plants).

Fun Fact: NCTA hosts a unique event called the "Aggie Days" each year. During Aggie Days, high school students visit the campus to participate in hands-on agricultural activities and competitions.



# UNIVERSITY OF NORTH CAROLINA

## Chapel Hill, North Carolina

UNC's men's basketball team is one of the most successful in NCAA history, with multiple national championships. The team has produced numerous NBA players and Hall of Famers.

Type: Public University

Acceptance rate: 20-25%, Very selective.

Popular Majors: Business, Biology, Psychology, Political Science, Journalist and Media, Computer Science, Education, Environmental sciences.

Fun Fact: A water fountain stands at the center of the campus called the "old well". Campus tradition states, on the first day of classes, a drink from the foundation will bring good luck and straight A's.



# UNIVERSITY OF MICHIGAN

## Ann Arbor, Michigan

The College of Pharmacy at the University of Michigan is renowned for its research contributions and innovative educational programs in pharmacy practice and pharmaceutical sciences.

Type: Public University

Acceptance rate: 18-20%, Very selective.

Popular Majors: Business Administration, Engineering, Computer Science, Biology, Psychology, Political Science, Economics, Nursing, Education.

Fun Fact: Michigan football has won multiple national championships. Michigan Stadium, known as "The Big House," is one of the largest stadiums in the world, with a seating capacity of 107,000.



# PIERPONT COMMUNITY COLLEGE

## Fairmont, West Virginia

Pierpont offers programs designed to prepare students for careers as electricians. The program emphasizes practical experience through lab work and field training.

Type: Community College

Acceptance rate: 100%, Less selective.

Popular Majors: Electrician, Nursing, Culinary Arts, Petroleum Technology, Aviation Technology, Criminal Justice, Human Services, Computer systems, Networking, Programming, and Information security.

Fun Fact: Provides career services, academic advising, and tutoring to help students succeed.



# OREGON STATE UNIVERSITY ONLINE



## Online

OSU Ecampus offers 80 undergraduate and graduate degree programs and certificates fully online.

Type: Public University Online

Acceptance rate: 82%, Less selective.

Popular Majors: business, computer science, engineering, education, natural resources, psychology, public health.

Fun fact: OSU Ecampus has a unique "Virtual Campus Tour" feature. This interactive tool allows prospective students to explore the online campus environment, including virtual classrooms, student services, and academic resources. It provides a glimpse into the online learning experience at OSU.

# MANHATTAN SCHOOL OF MUSIC



## New York City, New York

MSM focuses on music and performing arts. Admissions often involve auditions and portfolio reviews as an important part of the evaluation process.

Type: Private University

Acceptance rate: 30-35%, Average selective.

Popular Majors: Classical Performance, Music Education, Music Theory, Voice, Conducting, Opera Studies, Jazz Studies.

Fun fact: MSM's Miller Recital Hall, is a renowned venue for intimate classical and jazz performances. The hall is praised for its acoustics and is a key part of the school's performance culture.

# CORNISH COLLEGE OF THE ARTS

## Seattle, Washington

Cornish is recognized for its innovative dance program, which emphasizes contemporary dance and performance.

Type: Private University

Acceptance rate: 50%, Less selective.

Popular Majors: Dance, Theater, Visual Arts, Music, Creative Writing, Theatre Production.

Fun Fact: Cornish has a tradition called "The Cornish Bash." This annual event is a fun and creative gathering where students, faculty, and staff come together to celebrate the arts and the vibrant Cornish community. The Bash features live performances, art exhibits, interactive workshops.



# UNIVERSITY OF VIRGINIA

## Charlottesville, Virginia

UVA's men's soccer team has a storied history, including multiple NCAA championships and a strong tradition of developing professional players.

Type: Public University

Acceptance rate: 20-25%, Very selective.

Popular Majors: History, English, Environmental Sciences, Media Studies, Political Science, Economics, Biology, Business, Engineering, Psychology.

Fun Fact: It was founded in 1819 by Thomas Jefferson who designed the Rotunda as the central symbol of the university designed after the Pantheon in Rome. It was intended to be the heart of the university's academic and social life.



# UNIVERSITY OF MIAMI

## Coral Gables, Florida

The Rosenstiel School of Marine and Atmospheric Science (RSMAS) is renowned for its research and programs in marine science, oceanography, and atmospheric science.

Type: Private University

Acceptance rate: 33%, Average Selective.

Popular Majors: Marine Science, Business

Administration, Health Sciences, Music, Communication, Psychology, Public Administration.

Fun fact: The university's campus is known for its lush, tropical setting and beautiful architecture. It features modern facilities and green spaces, enhancing the student experience.



# UNIVERSITY OF TEXAS

## Austin, Texas

UT Austin is renowned for its programs in kinesiology and physical culture, with excellent research facilities and athletic programs.

Type: Public University

Acceptance rate: 30-35%, Average Selective.

Popular Majors: Kinesiology (study of human movement), Sports Mgmt, Architecture, Education, Communications, Engineering Mgmt, Business Admin.

Fun fact: UT Austin is home to the famous "Tower of Power," a 307-foot-tall landmark known as the UT Tower. Completed in 1937, is an iconic symbol of the university and is illuminated in different colors to celebrate special events.



# UNIVERSITY OF NOTRE DAME

## Notre Dame, Indiana

Includes centers such as the Institute for Computational Science and Engineering, the Notre Dame Radiation Laboratory, and the Eck Institute for Global Health.

Type: Private Catholic University

Acceptance rate: 20%, Very Selective.

Popular Majors: History, Theology, Arts and Letters, Finance, Economics, Political Science, Business, Engineering.

Fun fact: Known as the "Band of the Fighting Irish," the Notre Dame Marching Band is one of the oldest college bands in the country and has a rich tradition of performances at football games and events.



# HARVARD UNIVERSITY

## Cambridge, Massachusetts

Harvard Law School (HLS) is one of the most prestigious and well-known law schools in the world. Harvard Business School is renowned for its MBA program and is a leader in business education and research.

Type: Private University

Acceptance rate: 4%, Extremely selective.

Popular Majors: Economics, Government, Social Studies, Philosophy, History, English, Mathematics, Neuroscience.

Fun fact: Harvard is the oldest institution of higher education in the United States, with a rich history that spans over 380 years.



# CARNEGIE MELLON UNIVERSITY

## Pittsburgh, Pennsylvania

Carnegie Mellon is known for its Robotics Institute, which is one of the largest and prestigious robotics research centers in the world. The university has been a pioneer in robotics.

Type: Private University

Acceptance rate: 15%, Very Selective.

Popular Majors: Computer Science, Engineering, Robotics, Human-computer Interaction, Public Policy and Mgmt, Cognitive Science, Cyber-Physical Systems.

Fun Fact: Carnegie Mellon frequently participates in and hosts robotics competitions, such as the DARPA Grand Challenge, which showcases cutting-edge autonomous vehicle technology.



# CLEMSON UNIVERSITY

## Clemson, South Carolina

Clemson offers strong programs related to video game design and development. Clemson has specialized labs and facilities for game design, including high-performance computing labs and equipment for VR and AR development.

Type: Public University

Acceptance rate: 55%, Less Selective.

Popular Majors: Computer Science, Biological Sciences, Business Mgmt., Graphic Comm., Agricultural Sciences.

Fun Fact: Clemson University is located near Lake Hartwell, which offers opportunities for boating, fishing, and other outdoor activities. The lake is a popular spot for students.



# TULANE UNIVERSITY



## New Orleans, Louisiana

Tulane integrates public service into its core curriculum, requiring students to complete a public service requirement.

Type: Private University

Acceptance rate: 30%, Average selective.

Popular Majors: Social Sciences, Health Professions, Business, Environmental Biology, Music, Psychology.

Fun fact: Located in New Orleans, Tulane students are immersed in a vibrant cultural scene known for its jazz music, unique cuisine, and diverse heritage.

# PAUL MITCHELL SCHOOLS

## Multiple Locations

Paul Mitchell Schools has over 100 locations across the U.S. They offer a range of programs that cater to various interests within the industry, including cosmetology, barbering, esthetics, manicure, and makeup artistry.

Type: Technical School.

Acceptance rate: 100%, Less selective.

Popular Majors: Cosmetology (hairstyle, skincare, nailcare, makeup).

Fun fact: Paul Mitchell Schools offer a variety of financial aid options to help make education more accessible and affordable. This can include scholarships, grants, loans, and payment plans.



# RHODE ISLAND SCHOOL OF DESIGN

## Providence, Rhode Island

RISD is widely regarded as one of the top art and design schools in the world. Its painting program offers rigorous training and access to distinguished faculty and a vibrant artistic community.

Type: Private University

Acceptance rate: 20%, Extremely selective.

Popular Majors: Painting, Illustration, Graphic Design, Sculpture, Fashion Design, Photography, Animation.

Fun Fact: RISD has its own Museum of Art: The RISD Museum is one of the oldest and most prestigious art museums in the country. It boasts a diverse collection of over 100,000 objects, including works of art from ancient to contemporary periods.



# SULLIVAN UNIVERSITY

## Louisville, Kentucky

The center is renowned for its culinary programs, emphasizing hands-on training and experience. Students gain skills in cooking, baking, and food presentation.

Type: Private University

Acceptance rate: 70-80%, Less selective.

Popular Majors: Culinary Arts, Baking and Pastry Arts, Hospitality Mgmt., Event planning, Restaurant Mgmt.

Fun Fact: The center features a student-run restaurant where culinary students can gain practical experience in a real dining environment. This allows students to apply their skills in a professional setting and interact with customers.



# RICE UNIVERSITY



## Houston, Texas

Rice University is consistently ranked as one of the top architecture programs. Rice has a strong focus on community and student support, with initiatives such as the Rice Annual Fund and various student-led projects.

Type: Private University

Acceptance rate: 9%, Extremely Selective.

Popular Majors: Architecture, art History, History, Civil and Environmental Engineering, Computer Science, Bioengineering, Mechanical Engineering.

Fun fact: Rice's campus features beautiful Gothic architecture and is known for its unique and picturesque design.

# CORNELL UNIVERSITY



## Ithaca, New York

Cornell's Dept. of Computer Science is consistently ranked among the top in the nation and globally. programs with a broad range of specializations, including artificial intelligence, machine learning, data science, cybersecurity, and software engineering.

Type: Private University

Acceptance rate: 11%, Very Selective.

Popular Majors: Computer Science, Engineering, Business, Hotel Administration, Human Ecology, Law, Industrial and Labor Relations.

Fun fact: Cornell students frequently participate in hackathons, coding competitions, and tech conferences, showcasing their skills and innovations.



# UNIVERSITY OF ARIZONA



## Tucson, Arizona

The University of Arizona is a leader in space science and planetary exploration. The Lunar and Planetary Laboratory has played a significant role in missions such as the Mars rovers and the OSIRIS-REx mission.

Type: Public University

Acceptance rate: 84%, Less Selective.

Popular Majors: Space Science/Astronomy, Science Technologies, Biological Sciences, Optical Sciences, Medicine, Environmental Science, Aerospace Eng.

Fun Fact: The university operates Biosphere 2, an ambitious research facility that simulates different biomes and ecosystems, including a rainforest, ocean, and desert.

# UNITED STATES AIR FORCE ACADEMY

## Colorado Springs, Colorado

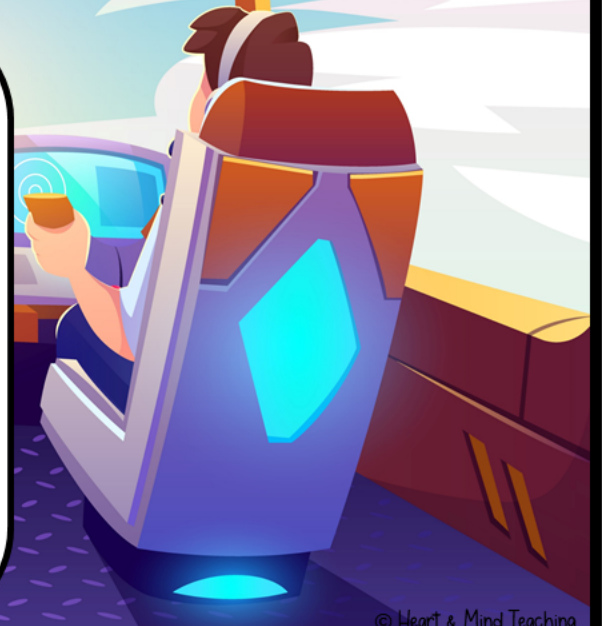
Offers a comprehensive pilot training program for future Air Force pilots.

Type: Military Academy

Acceptance rate: 8-10%, Extremely Selective.

Popular Majors: Aeronautical Engineering, Aerospace Engineering, Computer Science, Cyber Science, Military History, Political Science, Management, Engineering Mechanics.

Fun Fact: Cadets participate in a unique free-fall parachute training called "Jump School." This training is a part of their summer programs and includes a series of jumps from aircraft to help build confidence and skills in aerial operations.



# EMORY UNIVERSITY

B  
I  
O  
C

## Atlanta, Georgia

The Robert W. Woodruff Library is one of the largest academic libraries in the Southeast, with extensive collections and resources for research and study.

Type: Private University

Acceptance rate: 8-10%, Extremely Selective.

Popular Majors: Biology, Business Administration, Psychology, Nursing, Economics, Chemistry, History, Public Health, English, Religious Studies, Environmental Sciences, Art History

Fun fact: The university is affiliated with the Carter Center, founded by former President Jimmy Carter, which focuses on global health, democracy promotion, and conflict resolution.



# JOHNS HOPKINS UNIVERSITY



## Baltimore, Maryland

The School of Medicine is renowned for its research and innovations. The Hospital is often ranked among the top hospitals in the nation and has been a leader in medical breakthroughs, including the development of the first successful open-heart surgery.

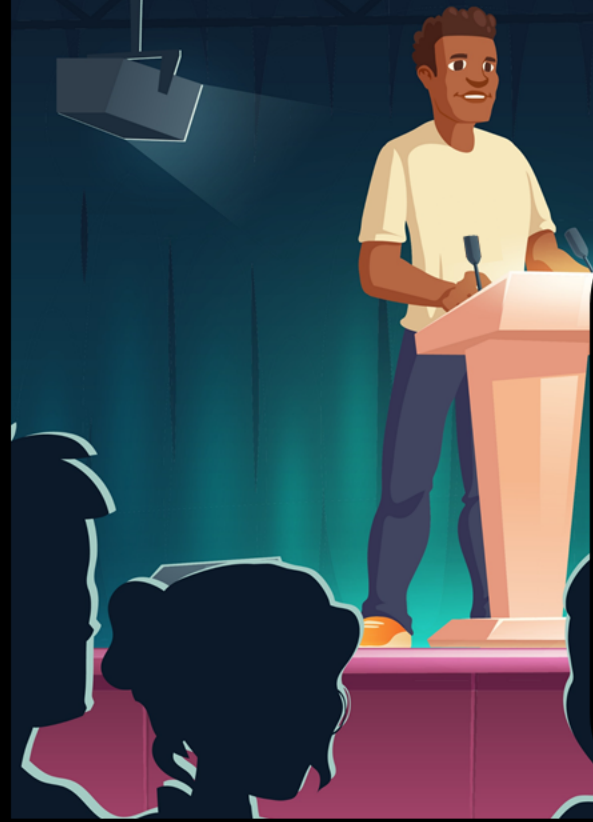
Type: Private University

Acceptance rate: 7%, Extremely selective.

Popular Majors: Public Health, Neuroscience, Chemical and Biomolecular Engineering, Biomedical Engineering, Physics and Astronomy.

Fun fact: The university has produced over 30 Nobel Prize Winners, including those in Medicine, Physics, and Chemistry.

# UNIVERSITY OF CALIFORNIA



## Berkeley, California

UC Berkeley, located in the San Francisco Bay area, has a long history of student activism and advocacy, dating back to the Free Speech Movement of the 1960s. The campus continues to be a hub for social justice, environmental advocacy, and political activism.

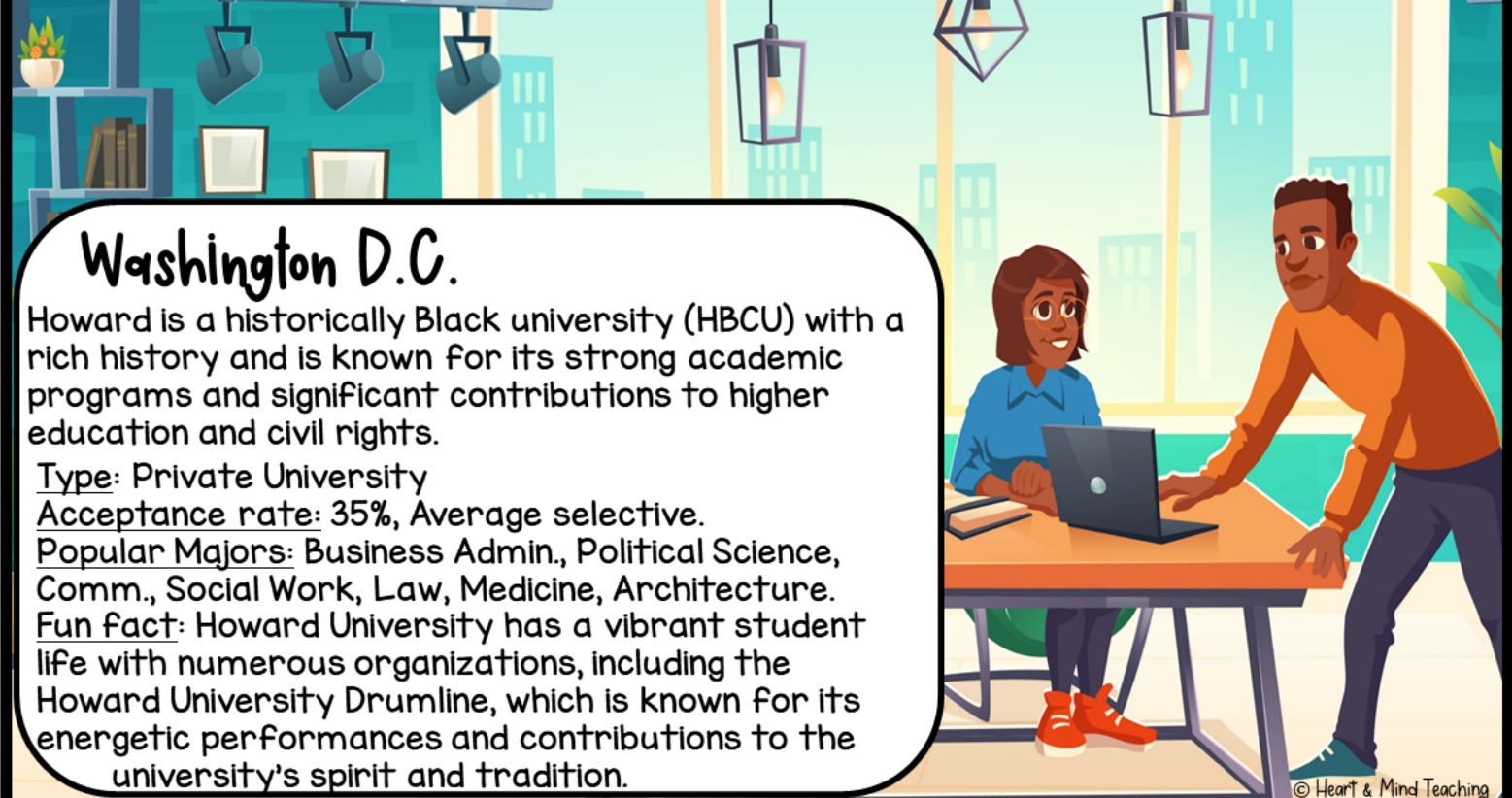
Type: Public University

Acceptance rate: 11%, Very selective.

Popular Majors: Sociology, Law, History, Political Science, Economics, Computer Science, Engineering, Biological Sciences.

Fun Fact: UC Berkeley is home to one of the earliest artificial intelligence research labs, contributing significantly to the field of AI and robotics.

# HOWARD UNIVERSITY



## Washington D.C.

Howard is a historically Black university (HBCU) with a rich history and is known for its strong academic programs and significant contributions to higher education and civil rights.

Type: Private University

Acceptance rate: 35%, Average selective.

Popular Majors: Business Admin., Political Science, Comm., Social Work, Law, Medicine, Architecture.

Fun Fact: Howard University has a vibrant student life with numerous organizations, including the Howard University Drumline, which is known for its energetic performances and contributions to the university's spirit and tradition.

# UNIVERSITY OF TENNESSEE



## Knoxville, Tennessee

UT is known for its strong research programs, including contributions to nuclear science, engineering, and environmental studies. The Oak Ridge National Laboratory, affiliated with UT, is one of the largest science and energy laboratories in the country.

Type: Public University

Acceptance rate: 79%, Less Selective.

Popular Majors: Nursing, Psychology, Engineering, Business, Kinesiology, Education, Communications, Human Development and Family Studies.

Fun fact: The UT campus is located near the Great Smoky Mountains, providing stunning natural scenery and outdoor recreational opportunities.

# WASHINGTON UNIVERSITY



## St. Louis, Missouri

WashU is known for its strong programs in the sciences, including chemistry. The Chemistry Department is known for its research in areas such as organic, inorganic, physical, and biochemistry.

Type: Private University

Acceptance rate: 11%, Very selective.

Popular Majors: Biology, Chemistry, Mechanical Engineering, Finance, Experimental Psychology, Computer Science, Pre-medical studies.

Fun fact: Approximately 30% of undergraduates participate in Greek life, which includes numerous fraternities and sororities offering various social, philanthropic, and leadership opportunities.

# OHIO STATE UNIVERSITY



## Columbus, Ohio

OSU's veterinary school is recognized for its comprehensive clinical training, research programs, and specialties in areas like surgery and emergency care.

Type: Public University

Acceptance rate: 53%, Less selective.

Popular Majors: Pre-Medical Studies, Agricultural Sciences, Arts and Humanities, Health Sciences, International Studies, Nursing, Communications.

Fun fact: OSU is one of the largest university campuses in the United States by enrollment. The university serves a diverse student body with a vibrant campus community.

# BABSON COLLEGE

## Wellesley, Massachusetts

Babson College is the number one undergrad school for entrepreneurship. It is highly sought after by students aiming for successful careers in various business fields.

Type: Private University

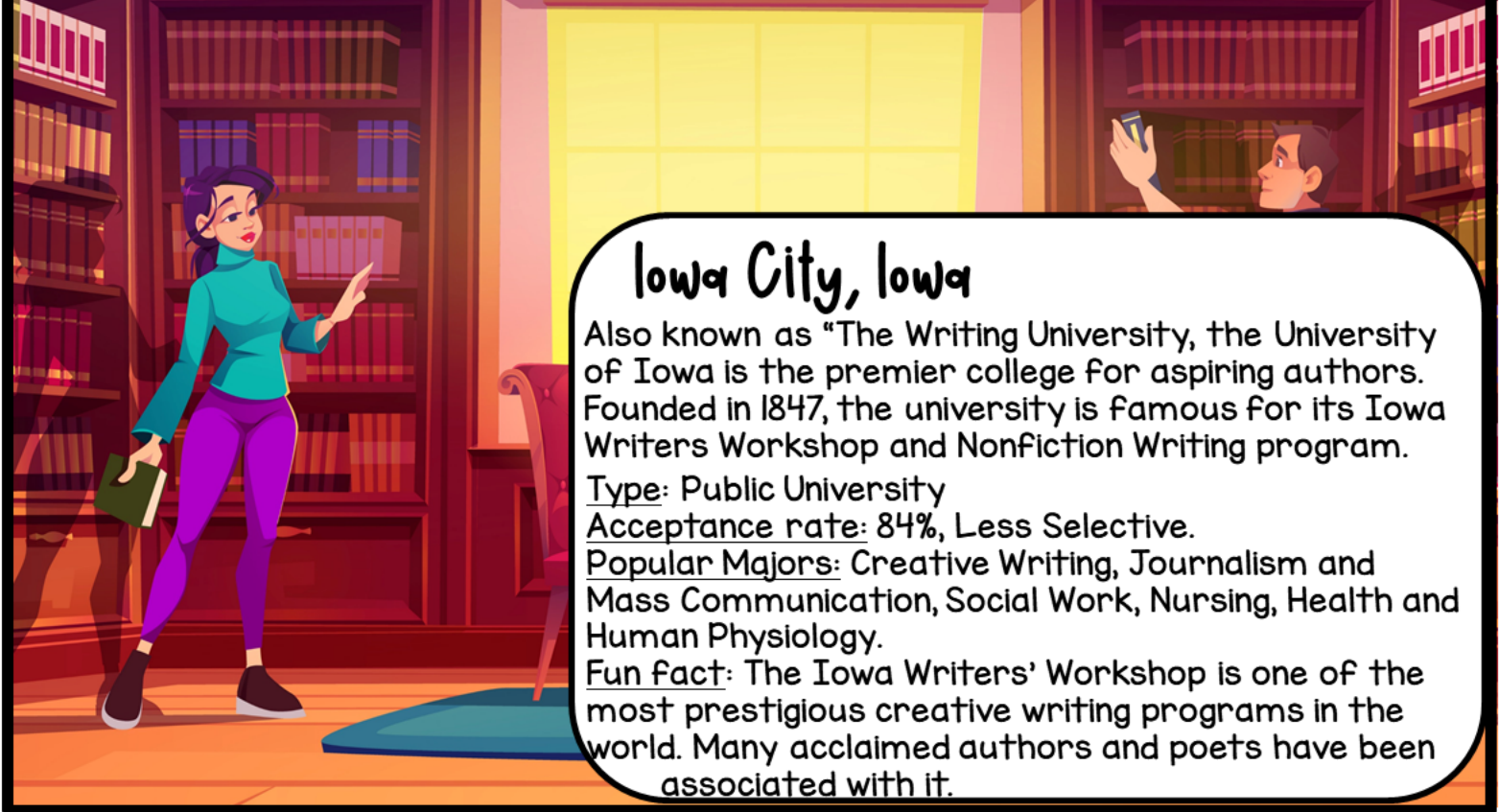
Acceptance rate: 26%, Average Selective.

Popular Majors: Accounting, Entrepreneurship, Business Admin. and Mgmt, Finance, Marketing, Real Estate, Info. Tech. Mgmt, International Business.

Fun fact: Babson College hosts an annual "Rocket Pitch" event where students present their business ideas in a rapid-fire format. Each participant has only three minutes to pitch their concept to an audience of peers, faculty, and investors.



# UNIVERSITY OF IOWA



## Iowa City, Iowa

Also known as "The Writing University," the University of Iowa is the premier college for aspiring authors. Founded in 1847, the university is famous for its Iowa Writers Workshop and Nonfiction Writing program.

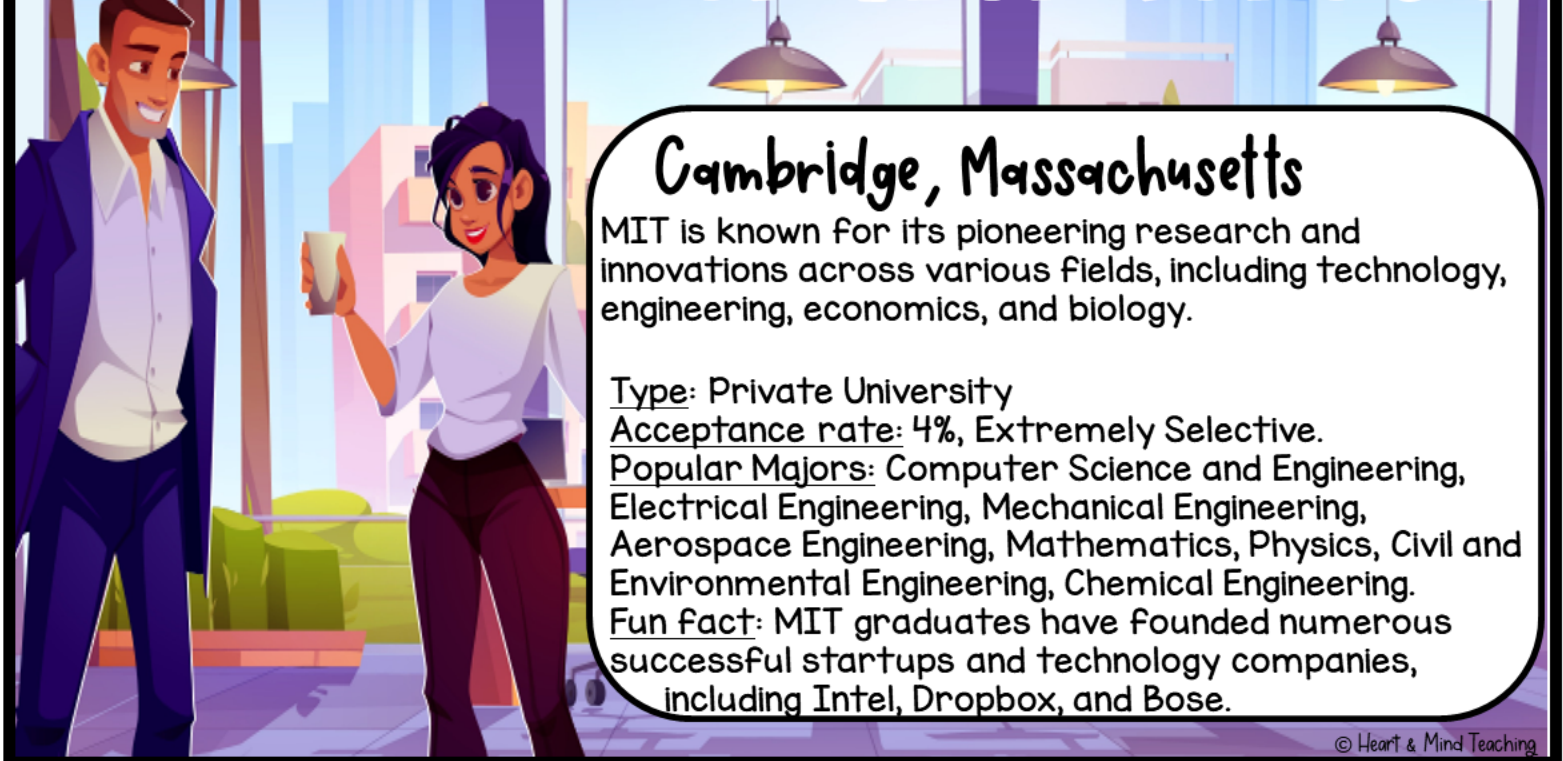
Type: Public University

Acceptance rate: 84%, Less Selective.

Popular Majors: Creative Writing, Journalism and Mass Communication, Social Work, Nursing, Health and Human Physiology.

Fun fact: The Iowa Writers' Workshop is one of the most prestigious creative writing programs in the world. Many acclaimed authors and poets have been associated with it.

# MASSACHUSETTS INSTITUTE OF TECHNOLOGY



## Cambridge, Massachusetts

MIT is known for its pioneering research and innovations across various fields, including technology, engineering, economics, and biology.

Type: Private University

Acceptance rate: 4%, Extremely Selective.

Popular Majors: Computer Science and Engineering, Electrical Engineering, Mechanical Engineering, Aerospace Engineering, Mathematics, Physics, Civil and Environmental Engineering, Chemical Engineering.

Fun fact: MIT graduates have founded numerous successful startups and technology companies, including Intel, Dropbox, and Bose.

# UNIVERSITY OF CONNECTICUT

## Storrs, Connecticut

UConn's School of Dental Medicine is well-known as one of the best dental schools. UConn gives their students substantial experience in clinical work and their in-house dental prosthetic arts laboratory.

Type: Public University

Acceptance rate: 55%, Less Selective.

Popular Majors: Health Sciences, Psychology, Nursing, Finance, Speech Communication, Economics.

Fun Fact: With over 600 student organizations and clubs, students have ample opportunities to get involved and pursue their passions outside the classroom.



# MITCHELL TECHNICAL COLLEGE

## Mitchell, South Dakota

Known for its hands-on approach to education, preparing students for immediate entry into the workforce with industry-specific skills. Programs often include internships or field experiences to provide real-world applications of learning.

Type: Technical College

Acceptance rate: 100%, Less Selective.

Popular Majors: Electrical Trades, Industrial Maintenance, Computer Networking, Medical Assisting, Welding Tech., Aviation Maint. Tech., Hospitality Mgmt.

Fun Fact: The college has a dedicated aviation hangar for aircraft maintenance training, and high-tech labs for its various technical programs.



# UNIVERSITY OF FLORIDA



## Gainesville, Florida

UF offers a comprehensive program in anthropology. It emphasizes the importance of fieldwork, providing students with opportunities to participate in archaeological digs, ethnographic research, and biological field studies both locally and internationally.

Type: Public University

Acceptance rate: 31%, Average Selective.

Popular Majors: Anthropology, Biological Sciences, Health related fields, Criminology, Agricultural and life sciences, Architecture and design.

Fun fact: UF researchers invented Gatorade in 1965 to help the university's football team stay hydrated. It has become a globally popular sports drink.

# SCHOOL OF AUDIO ENGINEERING INSTITUTE



## Multiple locations

One of the world's leading educators in the creative media and entertainment industries. SAE Institute has campuses in over 20 countries.

Type: Technical School.

Acceptance rate: 100%, Less Selective.

Popular Majors: Audio Engineering, Music Production, Film Production, Game Design, Animation, Music Business, Digital Marketing, Visual Effects.

Fun fact: SAE Institute often collaborates with major music and film companies, offering students unique opportunities for internships and projects with leading industry players.

# JAMES MADISON UNIVERSITY



## Harrisonburg, Virginia

Known for its highly ranked education programs, including teacher prep. and educational leadership.

Type: Public University

Acceptance rate: 68%, Less selective.

Popular Majors: Education, Communication studies, Health Sciences, Biology, Business Administration, Psychology, International Affairs.

Fun fact: The Quad is a central part of campus, providing a classic collegiate atmosphere. Residence halls are not only historic but also have a strong sense of community and tradition. Living in these historic dorms often gives students a sense of connection to the university's rich history.

# AUBURN UNIVERSITY

## Auburn, Alabama

Auburn's College of Engineering is highly regarded, with programs in aerospace, mechanical, and civil engineering among the university's strengths.

Type: Public University

Acceptance rate: 48%, Average Selective.

Popular Majors: Engineering, Business administration, Architecture, Pharmacy, Hospitality Management, Art and Design.

Fun fact: Auburn's annual Homecoming Parade is a big event, with floats, marching bands, and lots of school spirit. It's a major highlight of the fall semester.



# PRINCETON UNIVERSITY



## Princeton, New Jersey

Princeton offers extensive research opportunities in areas such as condensed matter physics, particle physics, astrophysics, and cosmology. The university is known for its cutting-edge research facilities and projects.

Type: Private University

Acceptance rate: 6%, Extremely Selective.

Popular Majors: Molecular Biology, mathematics, Philosophy, Sociology, History, Political Science, English.

Fun fact: Princeton University was founded in 1746, making it one of the oldest universities in the United States and a member of the prestigious Ivy League.

Pair the Tour  
Booklet below with  
the PowerPoint  
presentation to  
have students  
follow along and  
take notes.

# COLLEGE TOWN

\_\_\_\_\_ Your Name

## Tour Booklet

### NORTHWESTERN UNIVERSITY

Where is it located?

What is it known for?

What type of School is it?

Technical School	Community College	Military Academy	Public University	Private University
------------------	-------------------	------------------	-------------------	--------------------

What is the acceptance rate?

51-100%	26-50%	10-25%	0-9%
Less Selective	Average Selective	Very Selective	Extremely Selective

What are some popular majors?

# NEBRASKA COLLEGE OF TECHNICAL AGRICULTURE



Where is it located?

What is it known for?

What type of School is it?

Technical School   Community College   Military Academy   Public University   Private University

What is the acceptance rate?

51-100%	26-50%	10-25%	0-9%
Less Selective	Average Selective	Very Selective	Extremely Selective

What are some popular majors?

# UNIVERSITY OF NORTH CAROLINA



Where is it located?

What is it known for?

What type of School is it?

Technical School   Community College   Military Academy   Public University   Private University

What is the acceptance rate?

51-100%	26-50%	10-25%	0-9%
Less Selective	Average Selective	Very Selective	Extremely Selective

What are some popular majors?

# UNIVERSITY OF MICHIGAN



Where is it located?

What is it known for?

What type of School is it?

Technical School   Community College   Military Academy   Public University   Private University

What is the acceptance rate?

51-100%	26-50%	10-25%	0-9%
Less Selective	Average Selective	Very Selective	Extremely Selective

What are some popular majors?

# PIERPONT COMMUNITY COLLEGE



Where is it located?

What is it known for?

What type of School is it?

Technical School   Community College   Military Academy   Public University   Private University

What is the acceptance rate?

51-100%	26-50%	10-25%	0-9%
Less Selective	Average Selective	Very Selective	Extremely Selective

What are some popular majors?

# OREGON STATE UNIVERSITY ONLINE



Where is it located?

What is it known for?

What type of School is it?

Technical School   Community College   Military Academy   Public University   Private University

What is the acceptance rate?

51-100%	26-50%	10-25%	0-9%
Less Selective	Average Selective	Very Selective	Extremely Selective

What are some popular majors?

# MANHATTAN SCHOOL OF MUSIC



Where is it located?

What is it known for?

What type of School is it?

Technical School   Community College   Military Academy   Public University   Private University

What is the acceptance rate?

51-100%	26-50%	10-25%	0-9%
Less Selective	Average Selective	Very Selective	Extremely Selective

What are some popular majors?

# CORNISH COLLEGE OF THE ARTS



Where is it located?

What is it known for?

What type of School is it?

Technical School   Community College   Military Academy   Public University   Private University

What is the acceptance rate?

51-100%	26-50%	10-25%	0-9%
Less Selective	Average Selective	Very Selective	Extremely Selective

What are some popular majors?

# UNIVERSITY OF VIRGINIA



Where is it located?

What is it known for?

What type of School is it?

Technical School   Community College   Military Academy   Public University   Private University

What is the acceptance rate?

51-100%	26-50%	10-25%	0-9%
Less Selective	Average Selective	Very Selective	Extremely Selective

What are some popular majors?

# UNIVERSITY OF MIAMI



Where is it located?

What is it known for?

What type of School is it?

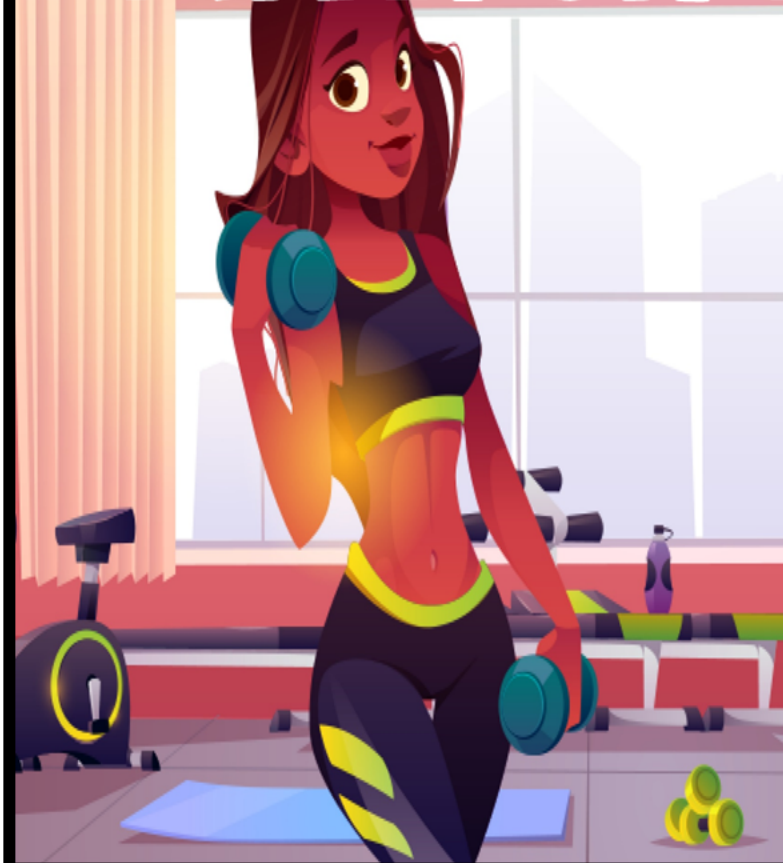
Technical School	Community College	Military Academy	Public University	Private University
------------------	-------------------	------------------	-------------------	--------------------

What is the acceptance rate?

51-100%	26-50%	10-25%	0-9%
Less Selective	Average Selective	Very Selective	Extremely Selective

What are some popular majors?

# UNIVERSITY OF TEXAS



Where is it located?

What is it known for?

What type of School is it?

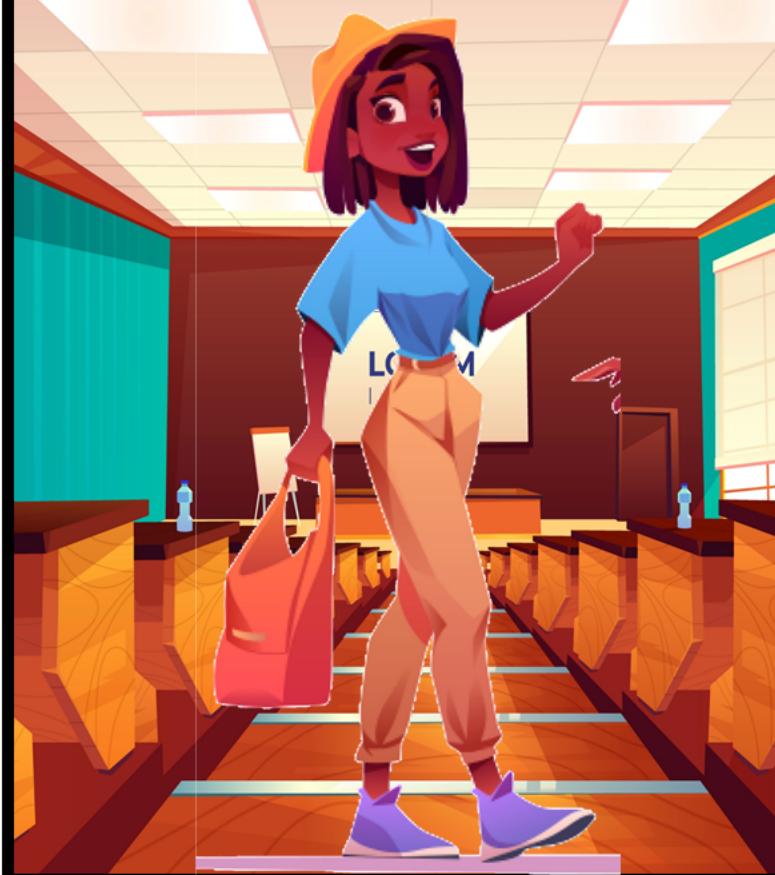
Technical School	Community College	Military Academy	Public University	Private University
------------------	-------------------	------------------	-------------------	--------------------

What is the acceptance rate?

51-100%	26-50%	10-25%	0-9%
Less Selective	Average Selective	Very Selective	Extremely Selective

What are some popular majors?

# UNIVERSITY OF NOTRE DAME



Where is it located?

What is it known for?

What type of School is it?

Technical School   Community College   Military Academy   Public University   Private University

What is the acceptance rate?

51-100%	26-50%	10-25%	0-9%
Less Selective	Average Selective	Very Selective	Extremely Selective

What are some popular majors?

# HARVARD UNIVERSITY



Where is it located?

What is it known for?

What type of School is it?

Technical School   Community College   Military Academy   Public University   Private University

What is the acceptance rate?

51-100%	26-50%	10-25%	0-9%
Less Selective	Average Selective	Very Selective	Extremely Selective

What are some popular majors?

# CARNEGIE MELLON UNIVERSITY



Where is it located?

What is it known for?

What type of School is it?

Technical School   Community College   Military Academy   Public University   Private University

What is the acceptance rate?

51-100%	26-50%	10-25%	0-9%
Less Selective	Average Selective	Very Selective	Extremely Selective

What are some popular majors?

# CLEMSON UNIVERSITY



Where is it located?

What is it known for?

What type of School is it?

Technical School   Community College   Military Academy   Public University   Private University

What is the acceptance rate?

51-100%	26-50%	10-25%	0-9%
Less Selective	Average Selective	Very Selective	Extremely Selective

What are some popular majors?

# TULANE UNIVERSITY



Where is it located?

What is it known for?

What type of School is it?

Technical School   Community College   Military Academy   Public University   Private University

What is the acceptance rate?

51-100%	26-50%	10-25%	0-9%
Less Selective	Average Selective	Very Selective	Extremely Selective

What are some popular majors?

# PAUL MITCHELL SCHOOLS



Where is it located?

What is it known for?

What type of School is it?

Technical School   Community College   Military Academy   Public University   Private University

What is the acceptance rate?

51-100%	26-50%	10-25%	0-9%
Less Selective	Average Selective	Very Selective	Extremely Selective

What are some popular majors?

# RHODE ISLAND SCHOOL OF DESIGN



Where is it located?

What is it known for?

What type of School is it?

Technical School   Community College   Military Academy   Public University   Private University

What is the acceptance rate?

51-100%	26-50%	10-25%	0-9%
Less Selective	Average Selective	Very Selective	Extremely Selective

What are some popular majors?

# SULLIVAN UNIVERSITY



Where is it located?

What is it known for?

What type of School is it?

Technical School   Community College   Military Academy   Public University   Private University

What is the acceptance rate?

51-100%	26-50%	10-25%	0-9%
Less Selective	Average Selective	Very Selective	Extremely Selective

What are some popular majors?

# RICE UNIVERSITY



Where is it located?

What is it known for?

What type of School is it?

Technical School   Community College   Military Academy   Public University   Private University

What is the acceptance rate?

51-100%	26-50%	10-25%	0-9%
Less Selective	Average Selective	Very Selective	Extremely Selective

What are some popular majors?

# CORNELL UNIVERSITY



Where is it located?

What is it known for?

What type of School is it?

Technical School   Community College   Military Academy   Public University   Private University

What is the acceptance rate?

51-100%	26-50%	10-25%	0-9%
Less Selective	Average Selective	Very Selective	Extremely Selective

What are some popular majors?

# UNIVERSITY OF ARIZONA



Where is it located?

What is it known for?

What type of School is it?

Technical School	Community College	Military Academy	Public University	Private University
------------------	-------------------	------------------	-------------------	--------------------

What is the acceptance rate?

51-100%	26-50%	10-25%	0-9%
Less Selective	Average Selective	Very Selective	Extremely Selective

What are some popular majors?

# U.S. AIR FORCE ACADEMY



Where is it located?

What is it known for?

What type of School is it?

Technical School	Community College	Military Academy	Public University	Private University
------------------	-------------------	------------------	-------------------	--------------------

What is the acceptance rate?

51-100%	26-50%	10-25%	0-9%
Less Selective	Average Selective	Very Selective	Extremely Selective

What are some popular majors?

# EMORY UNIVERSITY



Where is it located?

What is it known for?

What type of School is it?

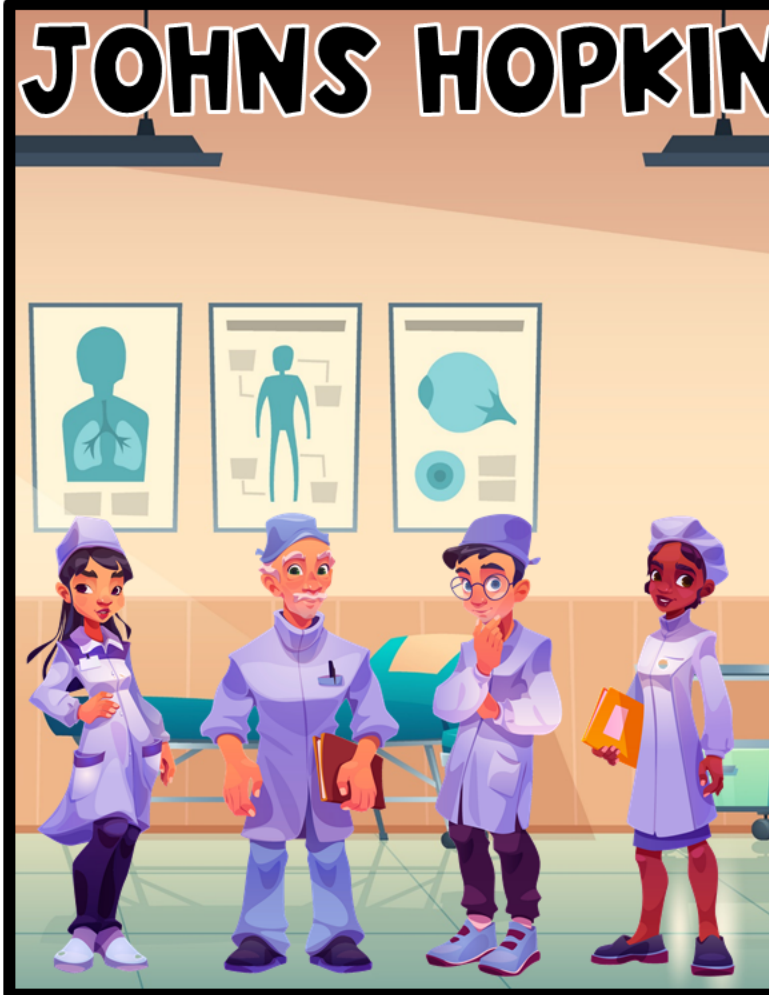
Technical School   Community College   Military Academy   Public University   Private University

What is the acceptance rate?

51-100%	26-50%	10-25%	0-9%
Less Selective	Average Selective	Very Selective	Extremely Selective

What are some popular majors?

# JOHNS HOPKINS UNIVERSITY



Where is it located?

What is it known for?

What type of School is it?

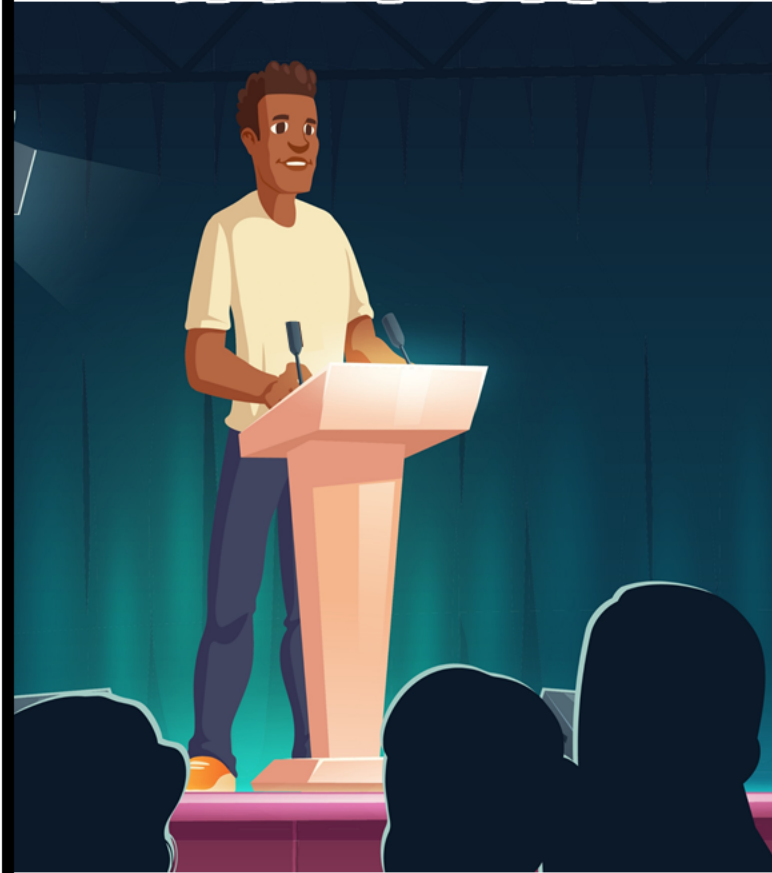
Technical School   Community College   Military Academy   Public University   Private University

What is the acceptance rate?

51-100%	26-50%	10-25%	0-9%
Less Selective	Average Selective	Very Selective	Extremely Selective

What are some popular majors?

# UNIVERSITY OF CALIFORNIA



Where is it located?

What is it known for?

What type of School is it?

Technical School   Community College   Military Academy   Public University   Private University

What is the acceptance rate?

51-100%	26-50%	10-25%	0-9%
Less Selective	Average Selective	Very Selective	Extremely Selective

What are some popular majors?

# HOWARD UNIVERSITY



Where is it located?

What is it known for?

What type of School is it?

Technical School   Community College   Military Academy   Public University   Private University

What is the acceptance rate?

51-100%	26-50%	10-25%	0-9%
Less Selective	Average Selective	Very Selective	Extremely Selective

What are some popular majors?

# UNIVERSITY OF TENNESSEE



Where is it located?

What is it known for?

What type of School is it?

Technical School	Community College	Military Academy	Public University	Private University
------------------	-------------------	------------------	-------------------	--------------------

What is the acceptance rate?

51-100%	26-50%	10-25%	0-9%
Less Selective	Average Selective	Very Selective	Extremely Selective

What are some popular majors?

# WASHINGTON UNIVERSITY



Where is it located?

What is it known for?

What type of School is it?

Technical School	Community College	Military Academy	Public University	Private University
------------------	-------------------	------------------	-------------------	--------------------

What is the acceptance rate?

51-100%	26-50%	10-25%	0-9%
Less Selective	Average Selective	Very Selective	Extremely Selective

What are some popular majors?

# OHIO STATE UNIVERSITY



Where is it located?

What is it known for?

What type of School is it?

Technical School   Community College   Military Academy   Public University   Private University

What is the acceptance rate?

51-100%	26-50%	10-25%	0-9%
Less Selective	Average Selective	Very Selective	Extremely Selective

What are some popular majors?

# BABSON COLLEGE



Where is it located?

What is it known for?

What type of School is it?

Technical School   Community College   Military Academy   Public University   Private University

What is the acceptance rate?

51-100%	26-50%	10-25%	0-9%
Less Selective	Average Selective	Very Selective	Extremely Selective

What are some popular majors?

# UNIVERSITY OF IOWA



Where is it located?

What is it known for?

What type of School is it?

Technical School   Community College   Military Academy   Public University   Private University

What is the acceptance rate?

51-100%	26-50%	10-25%	0-9%
Less Selective	Average Selective	Very Selective	Extremely Selective

What are some popular majors?

# MASSACHUSETTS INSTITUTE OF TECHNOLOGY



Where is it located?

What is it known for?

What type of School is it?

Technical School   Community College   Military Academy   Public University   Private University

What is the acceptance rate?

51-100%	26-50%	10-25%	0-9%
Less Selective	Average Selective	Very Selective	Extremely Selective

What are some popular majors?

# UNIVERSITY OF CONNECTICUT



Where is it located?

What is it known for?

What type of School is it?

Technical School   Community College   Military Academy   Public University   Private University

What is the acceptance rate?

51-100%	26-50%	10-25%	0-9%
Less Selective	Average Selective	Very Selective	Extremely Selective

What are some popular majors?

# MITCHELL TECHNICAL COLLEGE



Where is it located?

What is it known for?

What type of School is it?

Technical School   Community College   Military Academy   Public University   Private University

What is the acceptance rate?

51-100%	26-50%	10-25%	0-9%
Less Selective	Average Selective	Very Selective	Extremely Selective

What are some popular majors?

# UNIVERSITY OF FLORIDA



Where is it located?

What is it known for?

What type of School is it?

Technical School	Community College	Public University	Private University
---------------------	----------------------	----------------------	-----------------------

What is the acceptance rate?

51-100% Less Selective	26-50% Average Selective	10-25% Very Selective	0-9% Extremely Selective
------------------------------	--------------------------------	-----------------------------	--------------------------------

What are some popular majors?

# SCHOOL OF AUDIO ENGINEERING INSTITUTE



Where is it located?

What is it known for?

What type of School is it?

Technical School	Community College	Public University	Private University
---------------------	----------------------	----------------------	-----------------------

What is the acceptance rate?

51-100% Less Selective	26-50% Average Selective	10-25% Very Selective	0-9% Extremely Selective
------------------------------	--------------------------------	-----------------------------	--------------------------------

What are some popular majors?



# JAMES MADISON UNIVERSITY

Where is it located?

What is it known for?

What type of School is it?

Technical School	Community College	Public University	Private University
---------------------	----------------------	----------------------	-----------------------

What is the acceptance rate?

51-100% Less Selective	26-50% Average Selective	10-25% Very Selective	0-9% Extremely Selective
------------------------------	--------------------------------	-----------------------------	--------------------------------

What are some popular majors?



# AUBURN UNIVERSITY

Where is it located?

What is it known for?

What type of School is it?

Technical School	Community College	Public University	Private University
---------------------	----------------------	----------------------	-----------------------

What is the acceptance rate?

51-100% Less Selective	26-50% Average Selective	10-25% Very Selective	0-9% Extremely Selective
------------------------------	--------------------------------	-----------------------------	--------------------------------

What are some popular majors?

# PRINCETON UNIVERSITY



Where is it located?

What is it known for?

What type of School is it?

Technical School	Community College	Military Academy	Public University	Private University
------------------	-------------------	------------------	-------------------	--------------------

What is the acceptance rate?

51-100%	26-50%	10-25%	0-9%
Less Selective	Average Selective	Very Selective	Extremely Selective

What are some popular majors?

## TOURING COLLEGE TOWN

Something interesting I learned about a College:

Something interesting I learned about types of Colleges:

Something interesting I learned about acceptance rates:

Something interesting I learned about popular majors:

# MY COLLEGE INTERESTS

The top 3 Colleges that interest me:

1

2

3

Acceptance rate:

(Circle all the ones  
that apply)

51-100%  
Less  
Selective

26-50%  
Average  
Selective

10-25%  
Very  
Selective

0-9%  
Extremely  
Selective

Locations the colleges are in:

Majors I am interested in at these Colleges:

# MY COLLEGE INTERESTS

These things are important to me when I choose a College:

(Circle the ones that apply)

Social Life    Close to Home    Scenic Location    Financial aid/Scholarships

Campus life    Extremely Selective    Greek life    Cost    Short Programs

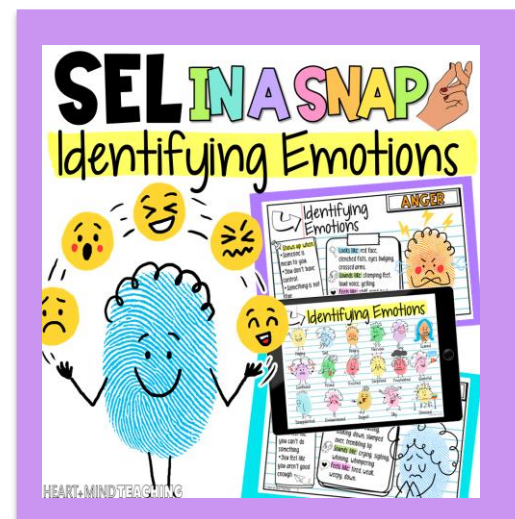
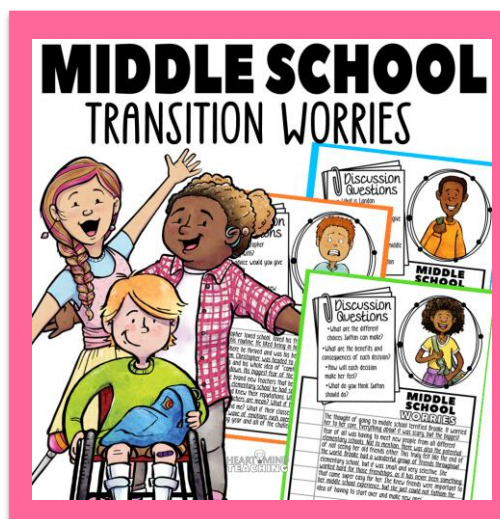
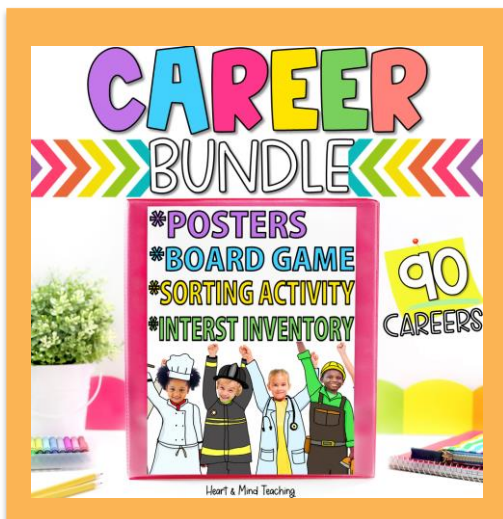
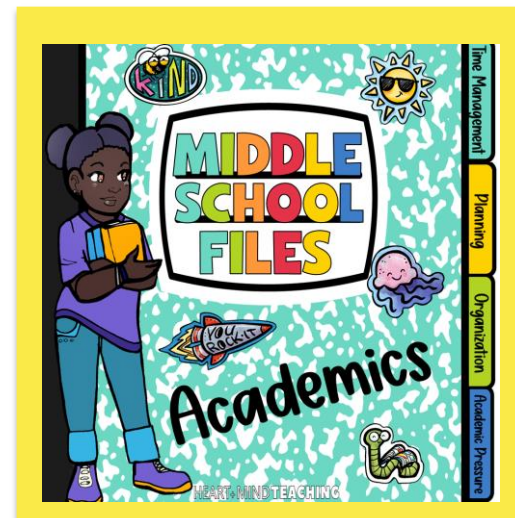
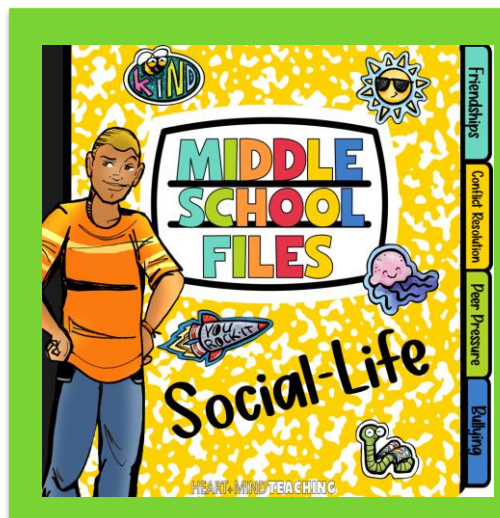
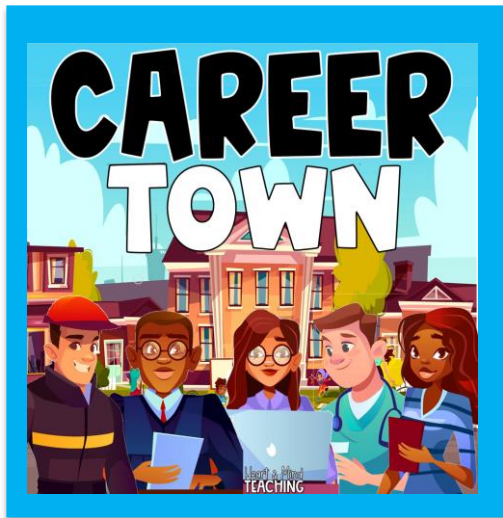
Sports/Clubs    Ivy League    Internships/Work Programs    Practical skills

City Location    Less Selective    Military Academy    Specializes in my major

Private School    Public School    Technical School    Community College

# CHECK THESE OUT

CLICK ON THE PICTURES TO GET A CLOSER LOOK.



Would you like to spend less time browsing for resources and lesson planning, and more time serving students? Let Laura from [Music City Counselor](#) and Ashley from [Heart and Mind Teaching](#) do the work for you!

**CLICK TO COLLAB**

## MEMBER PERKS

- ♥ Data-driven resources by theme.
- ♥ \$35+ value of ready-to-use materials.
- ♥ Lessons, group curriculums, forms, & activities.
- ♥ Tier 1, 2, and 3 research-based resources.
- ♥ No contracts, cancel anytime.

HEART+MIND  
TEACHING



# THANK YOU

FOR SUPPORTING MY LITTLE SHOP.

Hi there! I'm Ashley- a School Counselor, curriculum developer, blogger, and mama to two young boys. I have a passion for creating fun and engaging resources for Counseling and Social Emotional Learning.

## LET'S BE FRIENDS

  
Ashley

Access my  
Freebie  
Library



## FOLLOW FOR EXCLUSIVE SAVINGS

New products are 50% off for 24hrs.

[CLICK HERE](#)

★ HOW CAN YOU EARN TPT CREDITS? When you leave feedback, TpT rewards you with credits that you can use toward future purchases.

## ACCESS MY FREEBIE LIBRARY

Join my Newsletter to be informed of all future added freebies.

[I WANT FREEBIES](#)

# TERMS OF USE

© Heart and Mind Teaching, 2024. All rights reserved. Purchase of this item entitles the purchaser the right to reproduce for classroom, personal, and google classroom use only. Use in multiple classrooms, requires the purchase of additional licenses. Redistribution or duplication of this product is strictly forbidden without the written permission of the publisher. Copying any part of this product and placing it on a publicly accessible website is strictly forbidden and is a violation of the Digital Millennium Copyright Act (DMCA). You may post this for single-classroom use on a password protected student site such as google classroom. **You may NOT post my products on any public, for-profit, or commercial websites or entities, such as Outschool.** Please do not sell or distribute any part of this as your own. Thank you for abiding by universally accepted codes of professional ethics while using this product.



If you have any questions or concerns please email me at:

[heartandmindteaching@gmail.com](mailto:heartandmindteaching@gmail.com)

## CREDITS

